

Annual Report 2022

Triodos  Bank

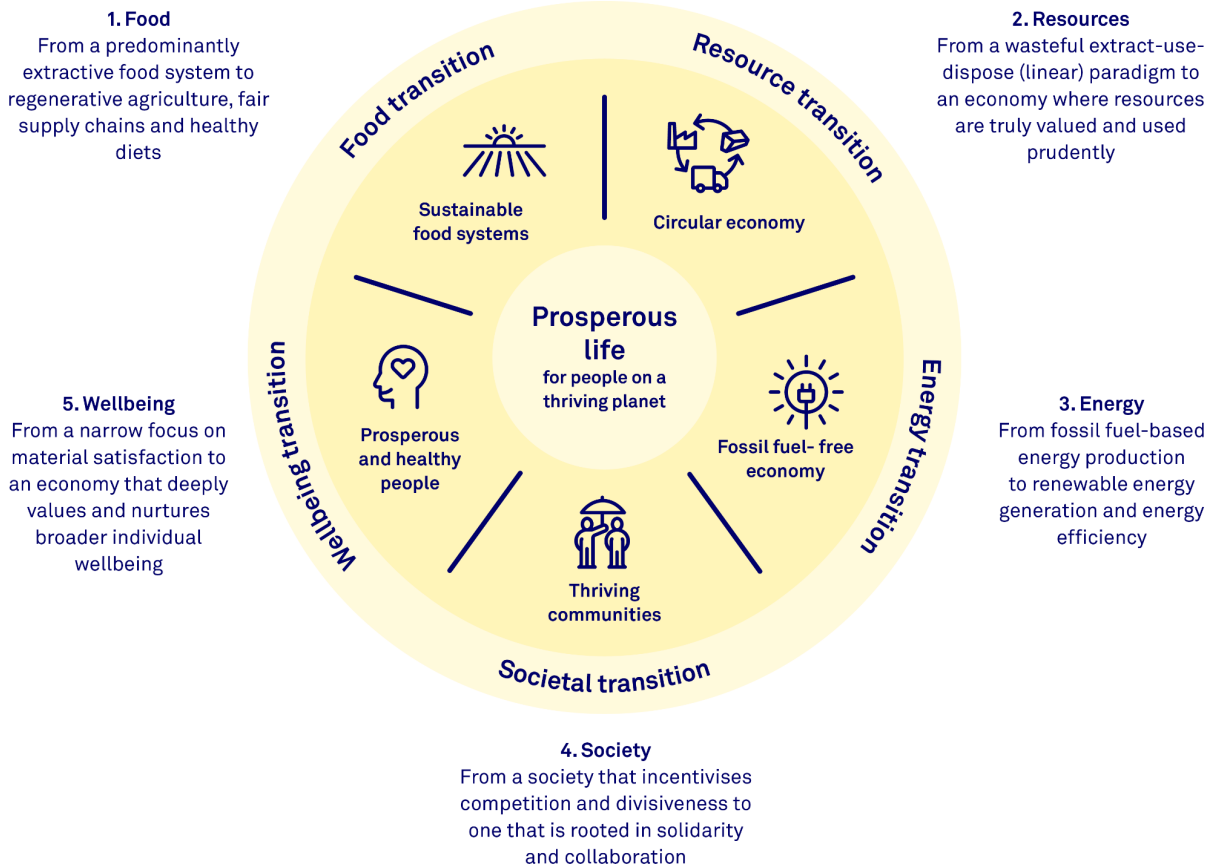
Lending by Sector

The lending by sector provides information about the loans and facilities outstanding per sector and per reportable banking segment. The sectors include loans and current accounts related to business banking, the mortgages are shown separately, and other facilities include private loans, other current accounts and credit cards.

The tables present the gross outstanding balance, the total ECL (stages 1, 2, and 3) and the net amount per sector. The gross outstanding balance includes

interest receivable and the fair value hedge adjustment. The number of loans and facilities excludes the number of current accounts and credit cards with no overdraft balance. Of the number of accounts - loans and advances to customers stated in the key figures (refer to Key figures (see page 6)), 41,355 accounts relate to facilities that have no overdraft balances (2021: 45,509 accounts) and have therefore not been included in the lending by sector overviews. The percentage shown is the percentage of the net amount per sector compared to the total net amount.

Focus on five interlinked transitions



Triodos Bank's redefined transition themes are common to all Triodos entities.

Triodos Bank has developed a Group-wide impact vision in which five transition themes were identified as shown in the diagram below. The lending by sector tables have been rearranged to reflect these five transition themes. Although not included under specific transition themes in the tables, the residential mortgage portfolio contributes to the themes Resources (by innovating new forms of mortgages such as the bio-based mortgage), Energy (by taking energy certificates into account for the interest rate of mortgage products), and Society (by advocating and enabling co-housing and social housing). For more information on these themes, refer to Our impact approach (see page 56).

Lending by sector in 2022

2022		Total				
Amounts in thousands of EUR		Gross amount	ECL	Net amount	%	Number
Food	Organic farming	168,305	-4,814	163,491	1.5	601
	Organic food	112,552	-4,989	107,563	1.0	565
		280,857	-9,803	271,054	2.5	1,166
Resources	Sustainable property	873,197	-2,498	870,698	8.2	393
	Nature development and Forestry	33,420	-213	33,206	0.3	63
	Retail non-food	25,962	-1,369	24,593	0.2	152
	Production	33,875	-102	33,773	0.3	136
	Professional services	64,375	-1,754	62,621	0.6	310
		1,030,828	-5,937	1,024,891	9.6	1,054
Energy	Renewable energy	1,590,798	-3,180	1,587,618	15.0	925
	Environmental technology	200,104	-4,460	195,644	1.8	287
		1,790,902	-7,640	1,783,262	16.8	1,212
Society	Social housing	527,394	-151	527,243	5.0	420
	Social projects	192,604	-1,197	191,407	1.8	474
	Development cooperation	39,141	-790	38,351	0.4	50
		759,139	-2,138	757,001	7.2	944
Wellbeing	Healthcare	1,118,324	-7,354	1,110,970	10.5	1,367
	Education	309,944	-733	309,211	2.9	506
	Child care	14,593	-22	14,571	0.1	60
	Arts and culture	496,751	-10,430	486,321	4.6	1,513
	Philosophy of life	77,036	-392	76,644	0.7	261
	Recreation	206,900	-4,206	202,694	1.9	416
		2,223,548	-23,137	2,200,411	20.7	4,123
Other	Residential mortgages	4,450,099	-1,802	4,448,297	41.9	18,348
	Municipality loans	124,358	-22	124,336	1.2	12
	Other facilities	11,162	-738	10,424	0.1	14,717
		4,585,619	-2,562	4,583,057	43.2	33,077
Total		10,670,893	-51,217	10,619,676	100.0	41,576

2022		The Netherlands				
Amounts in thousands of EUR		Gross amount	ECL	Net amount	%	Number
Food	Organic farming	57,227	-105	57,122	1.1	225
	Organic food	22,959	-161	22,798	0.4	130
		80,186	-266	79,920	1.5	355
Resources	Sustainable property	266,701	-712	265,989	5.1	183
	Nature development and Forestry	14,703	-30	14,673	0.3	7
	Retail non-food	4,994	-11	4,983	0.1	46
	Production	14,101	-67	14,034	0.3	35
	Professional services	25,183	-622	24,561	0.5	82
		325,682	-1,442	324,240	6.3	353
Energy	Renewable energy	357,386	-667	356,719	6.9	155
	Environmental technology	5,576	-30	5,546	0.1	18
		362,962	-697	362,265	7.0	173
Society	Social housing	41,750	-16	41,734	0.8	98
	Social projects	4,835	-2	4,833	0.1	20
	Development cooperation	17,737	-712	17,025	0.3	14
		64,322	-730	63,592	1.2	132
Wellbeing	Healthcare	348,030	-260	347,770	6.7	473
	Education	15,680	-1	15,679	0.3	39
	Child care	7,958	-1	7,957	0.2	28
	Arts and culture	169,775	-750	169,025	3.3	228
	Philosophy of life	12,702	-1	12,701	0.2	48
	Recreation	54,446	-212	54,234	1.0	146
		608,591	-1,225	607,366	11.7	962
Other	Residential mortgages	3,688,508	-613	3,687,895	71.1	13,026
	Municipality loans	60,045	-	60,045	1.2	3
	Other facilities	1,011	-92	919	-	3,942
		3,749,564	-705	3,748,859	72.3	16,971
Total		5,191,307	5,065-	5,186,242	100.0	18,946

2022		Belgium				
Amounts in thousands of EUR		Gross amount	ECL	Net amount	%	Number
Food	Organic farming	4,067	-527	3,540	0.2	53
	Organic food	17,778	-1,068	16,710	0.9	144
		21,845	-1,595	20,250	1.1	197
Resources	Sustainable property	250,050	-594	249,456	13.7	110
	Nature development and Forestry	5,966	-	5,966	0.3	11
	Retail non-food	6,065	-516	5,549	0.3	27
	Production	6,931	-7	6,924	0.4	25
	Professional services	7,787	-107	7,680	0.4	84
		276,799	-1,224	275,575	15.1	257
Energy	Renewable energy	465,403	-1,616	463,787	25.4	360
	Environmental technology	34,872	-123	34,749	1.9	61
		500,275	-1,739	498,536	27.3	421
Society	Social housing	81,005	-76	80,929	4.4	58
	Social projects	29,108	-29	29,079	1.6	111
	Development cooperation	3,505	-12	3,493	0.2	18
		113,618	-117	113,501	6.2	187
Wellbeing	Healthcare	213,332	-2,152	211,180	11.4	316
	Education	100,550	-99	100,451	5.5	216
	Child care	3,150	-18	3,132	0.2	18
	Arts and culture	56,746	-1,121	55,625	3.0	202
	Philosophy of life	5,150	-5	5,145	0.3	24
	Recreation	40,576	-1,213	39,363	2.2	59
		419,504	-4,608	414,896	22.6	835
Other	Residential mortgages	507,473	-990	506,483	27.7	2,726
	Municipality loans	-	-	-	-	-
	Other facilities	2	-	2	-	30
		507,475	-990	506,485	27.7	2,756
Total		1,839,516	-10,273	1,829,243	100.0	4,653

2022		United Kingdom				
Amounts in thousands of EUR		Gross amount	ECL	Net amount	%	Number
Food	Organic farming	33,987	-585	33,403	2.7	156
	Organic food	15,131	-721	14,410	1.1	26
		49,118	-1,306	47,813	3.8	182
Resources	Sustainable property	12,175	-3	12,171	1.7	19
	Nature development and Forestry	9,651	-113	9,538	-	15
	Retail non-food	9,745	-293	9,452	0.7	9
	Production	7,378	-4	7,374	0.6	5
	Professional services	17,058	-133	16,925	1.3	23
		56,007	-546	55,460	4.3	71
Energy	Renewable energy	261,713	-513	261,200	20.6	252
	Environmental technology	21,056	-108	20,948	1.7	52
		282,769	-621	282,148	22.3	304
Society	Social housing	375,841	-43	375,798	29.7	246
	Social projects	39,006	-344	38,662	3.1	81
	Development cooperation	15,391	-59	15,332	1.2	7
		430,238	-446	429,792	34.0	334
Wellbeing	Healthcare	255,888	-459	255,429	20.2	116
	Education	83,849	-342	83,507	6.6	46
	Child care	1,106	-	1,106	0.1	4
	Arts and culture	51,055	-7,211	43,844	3.4	54
	Philosophy of life	38,390	-288	38,102	3.0	126
	Recreation	29,644	-595	29,049	2.3	50
		459,932	-8,895	451,037	35.6	396
Other	Residential mortgages	-	-	-	-	-
	Municipality loans	-	-	-	-	-
	Other facilities	314	-50	264	-	1,031
		314	-50	264	-	1,031
Total		1,278,378	-11,864	1,266,514	100.0	2,318

2022		Spain				
Amounts in thousands of EUR		Gross amount	ECL	Net amount	%	Number
Food	Organic farming	73,024	-3,598	69,426	3.9	166
	Organic food	55,646	-3,037	52,609	2.9	259
		128,670	-6,635	122,035	6.8	425
Resources	Sustainable property	161,302	-1,169	160,133	8.9	44
	Nature development and Forestry	3,100	-70	3,030	0.1	30
	Retail non-food	5,158	-549	4,609	0.3	70
	Production	5,465	-24	5,441	0.3	71
	Professional services	14,347	-892	13,455	0.7	121
		189,372	-2,704	186,668	10.3	336
Energy	Renewable energy	389,534	-94	389,440	21.6	113
	Environmental technology	32,735	-4,078	28,657	1.6	130
		422,269	-4,172	418,097	23.2	243
Society	Social housing	28,798	-16	28,782	1.6	18
	Social projects	117,467	-817	116,650	6.5	260
	Development cooperation	2,508	-7	2,501	0.1	11
		148,773	-840	147,933	8.2	289
Wellbeing	Healthcare	227,284	-2,876	224,408	12.5	422
	Education	82,276	-282	81,994	4.6	181
	Child care	2,379	-3	2,376	0.1	10
	Arts and culture	216,647	-1,284	215,363	12.0	1,023
	Philosophy of life	20,794	-98	20,696	1.2	63
	Recreation	55,949	-2,025	53,924	3.0	150
		605,329	-6,568	598,761	33.4	1,849
Other	Residential mortgages	254,118	-199	253,919	14.1	2,596
	Municipality loans	64,313	-22	64,291	3.6	9
	Other facilities	8,047	-536	7,511	0.4	3,144
		326,478	-757	325,721	18.1	5,749
Total		1,820,891	-21,676	1,799,215	100.0	8,891

2022		Germany				
Amounts in thousands of EUR		Gross amount	ECL	Net amount	%	Number
Food	Organic farming	-	-	-	-	1
	Organic food	1,038	-2	1,036	0.2	6
		1,038	-2	1,036	0.2	7
Resources	Sustainable property	182,968	-20	182,948	34.0	37
	Nature development and Forestry	-	-	-	-	-
	Retail non-food	-	-	-	-	-
	Production	-	-	-	-	-
	Professional services	-	-	-	-	-
		182,968	-20	182,948	34.0	37
Energy	Renewable energy	116,762	-290	116,472	21.6	45
	Environmental technology	105,865	-121	105,744	19.6	26
		222,627	-411	222,216	41.2	71
Society	Social housing	-	-	-	-	-
	Social projects	2,188	-5	2,183	0.4	2
	Development cooperation	-	-	-	-	-
		2,188	-5	2,183	0.4	2
Wellbeing	Healthcare	73,790	-1,607	72,183	13.4	40
	Education	27,589	-9	27,580	5.1	24
	Child care	-	-	-	-	-
	Arts and culture	2,528	-64	2,464	0.5	6
	Philosophy of life	-	-	-	-	-
	Recreation	26,285	-161	26,124	4.9	11
		130,192	-1,841	128,351	23.9	81
Other	Residential mortgages	-	-	-	-	-
	Municipality loans	-	-	-	-	-
	Other facilities	1,788	-60	1,728	0.3	6,570
		1,788	-60	1,728	0.3	6,570
Total		540,801	-2,339	538,462	100.0	6,768

Lending by sector in 2021

2021		Total				
Amounts in thousands of EUR		Gross amount	ECL	Net amount	%	Number
Food	Organic farming	164,821	-4,521	160,300	1.6	616
	Organic food	123,816	-4,303	119,513	1.2	604
		288,637	-8,824	279,813	2.8	1,220
Resources	Sustainable property	874,503	-2,364	872,139	8.6	409
	Nature development and Forestry	33,878	-202	33,676	0.3	55
	Retail non-food	29,782	-1,470	28,312	0.3	162
	Production	25,650	-143	25,507	0.3	136
	Professional services	62,794	-2,405	60,389	0.6	307
		1,026,607	-6,584	1,020,023	10.1	1,069
Energy	Renewable energy	1,662,965	-3,571	1,659,394	16.3	959
	Environmental technology	187,891	-5,561	182,330	1.8	310
		1,850,856	-9,132	1,841,724	18.1	1,269
Society	Social housing	521,540	-93	521,447	5.1	387
	Social projects	214,352	-1,536	212,816	2.1	498
	Development cooperation	51,672	-966	50,706	0.4	66
		787,564	-2,595	784,969	7.6	951
Wellbeing	Healthcare	1,286,934	-5,740	1,281,194	12.6	1,389
	Education	329,122	-832	328,290	3.2	519
	Child care	15,990	-92	15,898	0.2	62
	Arts and culture	534,338	-5,297	529,041	5.2	1,450
	Philosophy of life	85,644	-178	85,466	0.8	267
	Recreation	239,497	-7,562	231,935	2.3	427
		2,491,525	-19,701	2,471,824	24.3	4,114
Other	Residential mortgages	3,621,347	-1,218	3,620,129	35.6	15,545
	Municipality loans	138,623	-26	138,597	1.4	16
	Other facilities	11,619	-900	10,719	0.1	14,693
		3,771,589	-2,144	3,769,445	37.1	30,254
Total		10,216,778	-48,980	10,167,798	100.0	38,877

2021		The Netherlands				
Amounts in thousands of EUR		Gross amount	ECL	Net amount	%	Number
Food	Organic farming	53,879	-197	53,682	1.2	210
	Organic food	20,143	-563	19,580	0.4	142
		74,022	-760	73,262	1.6	352
Resources	Sustainable property	288,036	-1,596	286,440	6.2	185
	Nature development and Forestry	22,910	-164	22,746	0.5	8
	Retail non-food	6,299	-25	6,274	0.1	49
	Production	5,636	-20	5,616	0.1	33
	Professional services	33,360	-1,447	31,913	0.7	93
		356,241	-3,252	352,989	7.6	368
Energy	Renewable energy	316,202	-315	315,887	6.9	124
	Environmental technology	7,564	-25	7,539	0.2	17
		323,766	-340	323,426	7.1	141
Society	Social housing	42,604	-22	42,582	0.9	97
	Social projects	4,270	-71	4,199	0.1	18
	Development cooperation	25,560	-888	24,672	0.5	17
		72,434	-981	71,453	1.5	132
Wellbeing	Healthcare	407,436	-553	406,883	8.8	481
	Education	21,944	-6	21,938	0.5	49
	Child care	8,683	-1	8,682	0.2	31
	Arts and culture	253,880	-637	253,243	5.5	261
	Philosophy of life	16,535	-1	16,534	0.4	48
	Recreation	72,915	-3,033	69,882	1.5	155
		781,393	-4,231	777,162	16.9	1,025
Other	Residential mortgages	2,967,899	-521	2,967,378	64.4	10,765
	Municipality loans	40,992	-	40,992	0.9	4
	Other facilities	1,228	-145	1,083	-	4,331
		3,010,119	-666	3,009,453	65.3	15,100
Total		4,617,975	10,230-	4,607,745	100.0	17,118

2021		Belgium				
Amounts in thousands of EUR		Gross amount	ECL	Net amount	%	Number
Food	Organic farming	4,564	-596	3,968	0.2	60
	Organic food	21,203	-965	20,238	1.1	159
		25,767	-1,561	24,206	1.3	219
Resources	Sustainable property	286,162	-621	285,541	15.7	124
	Nature development and Forestry	6,135	-	6,135	0.3	11
	Retail non-food	6,585	-580	6,005	0.3	28
	Production	7,439	-6	7,433	0.4	23
	Professional services	7,736	-30	7,706	0.4	80
		314,057	-1,237	312,820	17.1	266
Energy	Renewable energy	519,880	-1,645	518,235	28.4	364
	Environmental technology	22,922	-175	22,747	1.3	66
		542,802	-1,820	540,982	29.7	430
Society	Social housing	69,678	-57	69,621	3.8	44
	Social projects	29,350	-27	29,323	1.6	110
	Development cooperation	15,870	-24	15,846	0.8	31
		114,898	-108	114,790	6.2	185
Wellbeing	Healthcare	226,405	-189	226,216	12.4	318
	Education	102,559	-78	102,481	5.6	221
	Child care	3,470	-88	3,382	0.2	16
	Arts and culture	62,996	-695	62,301	3.4	204
	Philosophy of life	5,614	-4	5,610	0.3	24
	Recreation	52,245	-2,038	50,207	2.8	61
		453,289	-3,092	450,197	24.7	844
Other	Residential mortgages	375,943	-540	375,403	20.6	2,100
	Municipality loans	7,491	-	7,491	0.4	1
	Other facilities	-	-	-	-	-
		383,434	-540	382,894	21.0	2,101
Total		1,834,247	-8,358	1,825,889	100.0	4,045

2021		United Kingdom				
Amounts in thousands of EUR		Gross amount	ECL	Net amount	%	Number
Food	Organic farming	40,902	-1,216	39,686	3.0	174
	Organic food	14,482	-288	14,194	1.1	30
		55,384	-1,504	53,880	4.1	204
Resources	Sustainable property	8,024	-2	8,022	0.7	17
	Nature development and Forestry	2,499	-	2,499	-	11
	Retail non-food	11,351	-346	11,005	0.8	9
	Production	5,645	-44	5,601	0.4	5
	Professional services	11,441	-113	11,328	0.8	19
		38,960	-505	38,455	2.7	61
Energy	Renewable energy	286,790	-820	285,970	21.3	255
	Environmental technology	16,387	-91	16,296	1.2	43
		303,177	-911	302,266	22.5	298
Society	Social housing	374,449	-13	374,436	27.8	230
	Social projects	57,448	-404	57,044	4.2	98
	Development cooperation	7,182	-14	7,168	0.6	6
		439,079	-431	438,648	32.6	334
Wellbeing	Healthcare	318,749	-258	318,491	23.7	127
	Education	73,095	-267	72,828	5.4	47
	Child care	1,202	-	1,202	0.1	4
	Arts and culture	48,822	-2,880	45,942	3.4	49
	Philosophy of life	42,933	-112	42,821	3.2	133
	Recreation	31,420	-518	30,902	2.3	49
		516,221	-4,035	512,186	38.1	409
Other	Residential mortgages	-	-	-	-	-
	Municipality loans	-	-	-	-	-
	Other facilities	247	-30	217	-	907
		247	-30	217	-	907
Total		1,353,068	-7,416	1,345,652	100.0	2,213

2021		Spain				
Amounts in thousands of EUR		Gross amount	ECL	Net amount	%	Number
Food	Organic farming	65,390	-2,512	62,878	3.6	171
	Organic food	66,892	-2,485	64,407	3.7	267
		132,282	-4,997	127,285	7.3	438
Resources	Sustainable property	127,454	-138	127,316	7.2	47
	Nature development and Forestry	2,333	-37	2,296	0.1	25
	Retail non-food	5,547	-519	5,028	0.3	76
	Production	6,930	-73	6,857	0.4	75
	Professional services	10,257	-815	9,442	0.5	115
		152,521	-1,582	150,939	8.5	338
Energy	Renewable energy	366,483	-150	366,333	20.8	158
	Environmental technology	45,337	-4,965	40,372	2.3	141
		411,820	-5,115	406,705	23.1	299
Society	Social housing	34,809	-1	34,808	2.0	16
	Social projects	121,784	-1,032	120,752	6.9	268
	Development cooperation	3,060	-40	3,020	0.1	12
		159,653	-1,073	158,580	9.0	296
Wellbeing	Healthcare	219,606	-3,136	216,470	12.3	414
	Education	98,441	-451	97,990	5.6	175
	Child care	2,635	-3	2,632	0.1	11
	Arts and culture	167,518	-1,059	166,459	9.4	933
	Philosophy of life	20,562	-61	20,501	1.2	62
	Recreation	55,370	-1,920	53,450	3.0	149
		564,132	-6,630	557,502	31.6	1,744
Other	Residential mortgages	277,505	-157	277,348	15.8	2,680
	Municipality loans	73,609	-26	73,583	4.2	9
	Other facilities	8,640	-645	7,995	0.5	3,387
		359,754	-828	358,926	20.5	6,076
Total		1,780,162	-20,225	1,759,937	100.0	9,191

2021		Germany				
Amounts in thousands of EUR		Gross amount	ECL	Net amount	%	Number
Food	Organic farming	86	-	86	-	1
	Organic food	1,096	-2	1,094	0.2	6
		1,182	-2	1,180	0.2	7
Resources	Sustainable property	164,828	-8	164,820	26.2	36
	Nature development and Forestry	-	-	-	-	-
	Retail non-food	-	-	-	-	-
	Production	-	-	-	-	-
	Professional services	-	-	-	-	-
		164,828	-8	164,820	26.2	36
Energy	Renewable energy	173,610	-641	172,969	27.5	58
	Environmental technology	95,681	-305	95,376	15.2	43
		269,291	-946	268,345	42.7	101
Society	Social housing	-	-	-	-	-
	Social projects	1,500	-2	1,498	0.2	4
	Development cooperation	-	-	-	-	-
		1,500	-2	1,498	0.2	4
Wellbeing	Healthcare	114,738	-1,604	113,134	18.0	49
	Education	33,083	-30	33,053	5.3	27
	Child care	-	-	-	-	-
	Arts and culture	1,122	-26	1,096	0.2	3
	Philosophy of life	-	-	-	-	-
	Recreation	27,547	-53	27,494	4.4	13
		176,490	-1,713	174,777	27.9	92
Other	Residential mortgages	-	-	-	-	-
	Municipality loans	16,531	-	16,531	2.6	2
	Other facilities	1,504	-80	1,424	0.2	6,068
		18,035	-80	17,955	2.8	6,070
Total		631,326	-2,751	628,575	100.0	6,310